



Behavioral Health Bridge Housing (BHBH) Program

**Request for Applications (RFA)
Open to County Behavioral Health Agencies
Informational Webinar**

March 3, 2023



Housekeeping



This event is being recorded: Audio is now broadcasting.



Audio is provided through your computer speakers or headphones: Your line is automatically muted.



If you have issues with your sound: please reach out to the TECH team in the Q&A Box.



Live Captioning: Click CC Live Transcript to show or hide captions.



Full-screen: Double-click to toggle.



Housekeeping continued - Questions



Questions? Type in the Q & A box!

- » For this webinar, participants can only interact with the host through the Q & A box.
- » Questions can be submitted to the Q & A box throughout the webinar.
- » Questions not addressed today will receive responses, posted on the BHBH webpage.
- » Submit additional questions at the BHA RFA Help Desk: BHBH Program County Behavioral Health Agency (BHA) Request For Applications Help Desk ([BHA RFA Help Desk](#))



DHCS Welcome



Kelly Cowger

Branch Chief, Behavioral Health Expansion Branch
Community Services Division
California Department of Health Care Services

BHBH Informational Webinar

Hosted by Deborah (Deb) Werner
BHBH Program Director
Advocates for Human Potential (AHP)

Agenda

BHBH Overview

Program Requirements

Allowable Uses of Funds

How to Apply

Questions

BHBH Overview

Behavioral Health Bridge Housing (BHBH) County BHA Program Overview



- » Signed into law in September 2022 under [Assembly Bill 179](#) (Ting, Chapter 249, Statutes of 2022).
- » California Department of Health Care Services (DHCS) will provide a total of \$1.5 billion in funding to county behavioral health agencies and Tribal entities to operate bridge housing settings to address the immediate and sustainable housing needs of people experiencing homelessness who have serious behavioral health conditions, including a serious mental illness (SMI) and/or substance use disorder (SUD).
- » Builds on the California Health and Human Services Agency's [\(CalHHS's\) Guiding Principles and Strategic Priorities](#).
- » Enables DHCS and grantees to meaningfully contribute to the implementation of the California Interagency Council on Homelessness' [Action Plan for Preventing and Ending Homelessness in California](#).

BHBH Program Timeline



Release Date	Funding Amount	Eligibility	Type
February 2023	\$907M	County BHAs	Noncompetitive predetermined funding distribution
Spring 2023	\$50M	Tribal Entities	Competitive
Summer 2023	\$250M	BHAs and Tribal Entities	Competitive*
FY24-25	\$250M	BHAs and Tribal Entities	Competitive*

* These competitive rounds will take into consideration activities accomplished in the initial grant period that may include but are not limited to the number of bridge housing beds active and the number of individuals served in bridge housing.

Timeline for County BHA RFA




Event	Date
County BHAs RFA released	February 22, 2023
Informational webinar	March 3, 2023, 10:00 a.m. PT
County BHAs applications due	Accepted on a rolling basis on or before April 28, 2023, 4:00 p.m. PT
County BHA conditional awards announced	On a rolling basis, beginning June 2023
Contracts executed	Within 60 days of county BHA's receipt of initial contract

Purpose and Priorities

- » The primary focus of the BHBH Program is to help people experiencing homelessness who have serious behavioral health conditions that prevent them from accessing help and moving out of homelessness.
- » The BHBH Program provides funding for **operational and supportive services, not covered under other funding sources, to expand bridge housing implementation.**
- » The following priorities drive the implementation of the BHBH Program:
 - This is a critical need, and the focus is on immediate and sustainable solutions.
 - Collaboration will complement ongoing state, county, and tribal efforts to address homelessness.
 - BHBH Program settings will provide supportive services and housing navigation to assist people who have serious behavioral health conditions and are experiencing homelessness.

Possible Settings

- » Bridge housing settings may be existing facilities, leased or owned by either a county BHA or a provider/partner, that can be converted for use faster than a new capital project.
- » County BHAs are encouraged to explore innovative models using existing real estate that can be leased or quickly converted to create new BHBH Program settings.

	<p>Tiny homes</p>	<p>Master-leased units or buildings</p>	<p>Office, school, or warehouse conversions</p>
	<p>Hotels and motels</p>	<p>Converted churches and other community settings</p>	<p>Duplexes or large single-family homes</p>
	<p>Modular buildings</p>	<p>Converted decommissioned skilled nursing facilities (SNFs), assisted living, hospital conversions, etc.</p>	<p>Scattered-site individual units</p>

RFA 1: County Behavioral Health Agencies



- » \$907,936,000 to county behavioral health agencies.
- » The 58 county BHAs in California are eligible to apply for BHBH Program funding through this RFA.
- » In instances where a county's substance use disorder services and mental health services are operated under separate departments, each department may apply separately, however the requested funding amount must not exceed the maximum funding available for that county.

Maximum Funding per County (Attachment A)

County	Total Funding Available	County	Total Funding Available
Alameda	\$46,782,359	Orange	\$31,658,038
Alpine	\$1,067,142	Placer	\$4,364,704
Amador	\$1,741,012	Plumas	\$1,648,932
Butte	\$7,510,000	Riverside	\$24,004,293
Calaveras	\$1,728,261	Sacramento	\$43,077,410
Colusa	\$1,502,677	San Benito	\$2,260,924
Contra Costa	\$20,488,722	San Bernardino	\$27,375,170
Del Norte	\$2,618,164	San Diego	\$44,300,211
El Dorado	\$3,339,411	San Francisco	\$32,265,440
Fresno	\$21,833,333	San Joaquin	\$14,303,642
Glenn	\$1,746,530	San Luis Obispo	\$7,519,236
Humboldt	\$7,117,861	San Mateo	\$10,246,862
Imperial	\$6,968,054	Santa Barbara	\$9,932,242
Inyo	\$1,488,504	Santa Clara	\$51,568,399
Kern	\$15,159,004	Santa Cruz	\$10,171,130
Kings	\$2,919,309	Shasta	\$5,268,887
Lake	\$2,820,089	Sierra	\$1,090,326
Lassen	\$1,637,126	Siskiyou	\$2,425,534
Los Angeles	\$321,189,238	Solano	\$8,352,207
Madera	\$2,996,547	Sonoma	\$11,246,961
Marin	\$5,467,915	Stanislaus	\$10,819,200
Mariposa	\$1,396,991	Sutter	\$3,805,915
Mendocino	\$4,937,108	Tehama	\$2,371,591
Merced	\$6,915,610	Trinity	\$1,756,528
Modoc	\$1,260,647	Tulare	\$11,047,883
Mono	\$1,229,946	Tuolumne	\$2,077,802
Monterey	\$11,301,966	Ventura	\$13,325,088
Napa	\$3,425,528	Yolo	\$4,132,715
Nevada	\$3,601,814	Yuba	\$3,327,862
TOTAL \$907,936,000			

Program Requirements

See pages 5-7 of the RFA and Attachment C: Allowable BHBH
Program Activities

County BHA Program Administrative Requirements



- » Designate a program director, project lead, or other point of contact.
- » Coordinate with local or regional CoCs and other homeless service efforts within the county.
- » Include people with lived experience of homelessness and serious behavioral health conditions —both SMI and SUD—as part of BHBH programmatic planning, implementation, and quality improvement.
- » Submit policies and procedures for Participant Assistance Funds, Rental Assistance, and/or Landlord Outreach and Mitigation Funds, as applicable.
- » Certain uses of bridge housing startup infrastructure funding will require documentation of site control; insurance; compliance with federal, state, and local laws; and other certifications, as applicable.
- » Submit and update a BHBH Program Plan, using a template to be provided, that describes how the county BHA will use the BHBH Program funds.

Bridge Housing Eligible Uses & Requirements



- » At least 75 percent of the BHBH Program funds must be used for the costs of operating bridge housing.
- » Bridge housing will be established and provided based on community needs and Housing First principles and will include voluntary supportive services.
- » Bridge housing must meet the Emergency Solutions Grants (ESG) habitability standards and, when possible and as applicable, should also meet CoC Housing Quality Standards (HQS).
- » Support access to medication assisted treatment (MAT) and psychotropic medications for the treatment of mental disorders.
- » Prioritize and ensure that eligible CARE Program participants receive BHBH Program services.

Bridge Housing Eligible Uses & Requirements (Continued)

- » County BHAs may implement outreach and progressive engagement strategies to offer and encourage individuals and/or families to enter the BHBH Program.
- » Housing navigation and other supports will be made available to assist BHBH Program participants in accessing sustainable, affordable, permanent housing resources.
- » Allow for choice, enable people to stay in their “home” communities to the extent possible, and provide for community integration in accordance with all applicable federal and state regulations.
- » County BHAs must maximize all other funding sources, including Medi-Cal, to the greatest extent possible and should add new bridge housing beds to the system of care. BHBH Program funds may not be used to pay for existing services or housing supports that are currently reimbursed, or eligible for reimbursement through Medi-Cal (including Enhanced Care Management, Targeted Care Management, and Community Support Services), funding sources such as Mental Health Services Act-funded programs, or other federal or local programs.

Bridge Housing Start-up & Infrastructure Requirements



- » Complete all bridge housing start-up infrastructure activities and make beds available within one year of contract execution. Grantees that make beds available within 90 and 180 days will receive a competitive advantage in future rounds of BHBH Program funding, based on the number of beds made available within these time frames.
- » Submit policies and procedures for Rental Assistance to DHCS for review.

Bridge Housing Reporting, Monitoring Requirements



- Enter data on the individuals and families served by the BHBH Program into the local Homeless Management Information System (HMIS), as required by AB 977.
- Submit quarterly narrative and data reports that document progress toward improved outcomes.
- Participate in monthly calls, learning collaboratives, and other TTA activities.
- Conduct financial review auditing and fraud prevention, and ensure appropriate uses of funds.
- Provide required program updates and participate in monitoring and reimbursement reviews with DHCS and/or AHP, as requested.

Also see Section V. Administrative Requirements in the RFA starting on page 11.

Allowable Uses of Funds

Allowable Uses of Funds: Bridge Housing Operations (minimum of 75%)

For BHBH Bridge Housing may include any or all of the following approaches:

- ✓ **Interim Housing/Shelter**
 - Could include tiny homes, emergency shelter, motel vouchers or motel-based sheltering efforts, navigation centers, peer respite, crisis housing, transitional housing, recovery housing, recuperative care models, and/or community-reentry and diversion housing programs
- ✓ **Rental Assistance**
 - Submit policies and procedures for review
 - Short and mid-term rental assistance
- ✓ **Auxiliary Funding in Assisted Living** (commonly referred to as board and care patches)
- ✓ **Housing Navigation**
 - Must be made available to all BHBH program participants
 - Participant Assistance Funds
 - Landlord Outreach and Mitigation Funds

See RFA and Attachment C for more information.

Allowable Uses of Funds: Flexible Funding Categories



✓ **County BHA BHBH Program Implementation and Capacity Building**

- Convene advisory group
- Establish program lead
- Coordinate with local CoC and stakeholders
- Implement HMIS
- Submit reports and documentation

✓ **Outreach and Engagement**

- Not a standalone service
- Outreach to individuals experiencing or at risk of experiencing homelessness
- Collaboration with institutions to enhance discharge planning and prevent homelessness

Allowable Uses of Funds: Flexible Funding Categories continued



✓ Bridge Housing Start-Up Infrastructure

- » While the focus is operations, some BHBH Program funding can be used for start-up costs and to make facilities more available to individuals with serious behavioral health conditions.
- » Bridge housing start-up infrastructure funding is limited to \$75,000 per bed.
- » All bridge housing start-up infrastructure activities must be complete and beds made available within 1 year of contract execution.
- » Examples of allowable start-up infrastructure costs include:
 - contributing to the purchase of property
 - the initial purchase of furniture, equipment, and appliances
 - renovations
 - the purchase and placement of tiny homes and related utility hookups and supportive facilities
 - costs related to facility renovations, including allowable adaptive reuse

How to Apply

Responding to the RFA

- » In Attachment D of the RFA (page 26) there is a list of the questions that you will be asked on the SurveyMonkey Apply portal.
- » We recommend downloading the application and drafting responses prior to working in survey monkey.
- » A budget using the budget template and a budget narrative justification are required (See Attachment E, page 32 for instructions).
- » Signed Attestations (see Attachment F, page 36) must be uploaded to the application.

Sections of the RFA

- A. Application Organization Information**
- B. Application Summary**
- C. Experience**
- D. Understanding Community Needs**
- E. Proposed Program Design**
- F. Management Plan**
- G. Budget and Budget Narrative**
- H. Attestations**

Sections A. Applicant Organization Information and B. Application Summary

A. Application Organization Information

B. Application Summary

Provide a 250 to 300-word executive summary (for public use) describing your county's planned use of BHBH Program funding, including the number of beds to be created, people to be served, key partners, and desired outcomes.

C. Experience

1. Describe your county behavioral health agency's (BHA's) specific programs and efforts to address the housing needs of individuals with serious behavioral health conditions, including serious mental illness (SMI) and substance use disorder (SUD) (e.g., interim housing, recovery housing, Permanent Supportive Housing [PSH], homeless outreach). (500-word limit)
2. What is your county BHA's experience collaborating with the Continuum of Care (CoC) and other homeless/housing agencies in your community? Did you communicate or collaborate with the CoC in the development of the proposed BHBH Program? (250-word limit)

D. Understanding of Community Need

1. As part of the Homeless and Housing Assistance Program Round 3 (HHAP Round 3), the California Interagency Council on Homelessness required a comprehensive local homeless action plan. Applications and plans can be found at https://bcsh.ca.gov/calich/hhap_rd3_apps.html. Review your action plan(s) and answer the following questions.
 - a. Were you involved in the development of the HHAP Round 3 plan? If so, describe that involvement. (250-word limit)
 - b. To the best of your knowledge, are the data included in this action plan accurate for the BHBH Program? (YES/NO) Explain. (200-word limit)
2. Did people with lived experience of homelessness and/or a serious behavioral health condition contribute to this proposal? (YES/NO) If yes, what were their contributions? (200-word limit)

D. Understanding of Community Need continued

3. Have you used additional reports or data to inform the design of your BHBH Program? (YES/NO) [If yes:]

- a. Provide citations and links and/or attach other reports or information that have informed your assessment of community need.
- b. What do those reports say about reaching and serving people experiencing both homelessness and serious behavioral health conditions in your community? (350-word limit)

[If no:] How did you determine the gaps that would be served by the BHBH Program? (350-word limit)

4. **What are the gaps in the current system for people with behavioral health conditions that would be addressed by the BHBH Program?** Are there specific subpopulations of the target population in your county that would be prioritized for support through the BHBH Program? (400-word limit)

E. Proposed Program Design – Part 1

Overview

1. What housing types do you propose to develop through the BHBH Program, how many beds will be available in each, and how did you estimate the need by housing type? (350-word limit)
2. How will you identify potential bridge housing options described above and how will you secure them for use for BHBH Program participants? (500-word limit)
3. How will the BHBH Program address the unique needs of individuals with diverse behavioral health conditions (e.g., opioid use disorder, psychotic disorder, post-traumatic stress disorder, stimulant use disorder)? (500-word limit)
4. How do you plan to address the needs of diverse cultural groups, families, and other unique populations? What steps are you taking to advance racial equity in the design of the BHBH Program? (500-word limit)
5. How does your county BHA plan to use the BHBH Program to support CARE Program participants? (350-word limit)

E. Proposed Program Design – Part 2

Housing Navigation



6. How will you ensure housing navigation is provided to all BHBH Program participants? Describe your housing navigation program, including the following:
 - a. How will you identify and prioritize participants for housing navigation?
 - b. What will be provided?
 - c. Will you offer Landlord Outreach and Mitigation Funds?
 - d. How will housing navigation be provided?
 - e. Do you plan to provide Participant Assistance Funds to help people meet their housing needs? How will these funds be managed?

E. Proposed Program Design – Part 3: Details on Proposed BHBH Strategies

7. Which of the following activities do you plan to fund using the BHBH Program? Address the estimates of people served that are included in your budget template as you answer questions 8-13. (Application note: In the application portal, if you check the box, it will move you to the next question. Some questions will be skipped if the box is not checked.)

- County BHA BHBH Program implementation requirements (if yes, applicant completes question 8)
- Outreach and engagement (if yes, applicant completes question 9)
- Bridge housing-Shelter/interim housing (if yes, applicant completes question 10)
- Bridge housing-Rental assistance (If yes, applicant completes question 11)
- Bridge housing-Auxiliary funding in assisted living settings (commonly referred to as board and care patches) (if yes, applicant completes question 12)
- Bridge housing start-up infrastructure (if yes, applicant completes question 13)

Questions 8 – 13 require additional details on each proposed BHBH strategy.

F. Management Plan

Describe your agency's capacity to implement this project:

1. Describe your overall management and staffing plan for implementation of the BHBH Program.
 - a. How will you involve people with lived experience of homelessness and serious behavioral health conditions—both SMI and SUD—as part of the planning, implementation, and quality improvement?
 - b. Provide a brief description of the role of the BHBH program director or lead, including FTE dedicated to this project.
 - c. Do you plan to subcontract with provider organizations? If yes, provide a brief description of the role of subcontractors/providers, including how they will be selected and a timeline to initiate operations.
 - d. Provide an organizational chart that shows how the BHBH Program will be housed in relation to your county's/agency's other behavioral health and homeless/housing programs.

F. Management Plan continued

2. Does your county BHA currently enter information into the HMIS data portal? YES/NO
 - » [If no:] Are there efforts currently underway for the BHA to enter data into HMIS? YES/NO
 - » Are there significant barriers to implementation that will need to be addressed?
3. **Provide a detailed timeline with significant milestones** for the bridge housing start-up and implementation of the BHBH Program using the table below.

G. Budget and Budget Narrative

- » Budget template and budget narrative justification (See Attachment E, page 32 for instructions)
 - Download and complete the budget template.
 - Draft narrative justification.
 - Upload budget and narrative justification into survey monkey.
 - Budget template includes service-related information.

(Demonstration)

H. Attestations

Sign and upload the Attestation contained in Attachment F (RFA page 36).

Requesting an Exception to the budgetary specifications



DHCS may grant requests for exceptions to the budgetary specifications, including the limitations upon start-up infrastructure funding and the requirement that 75% of BHBH funds must be used for operating costs, when necessary for the requesting county to achieve the BHBH Program goals and objectives described in Section IV.

Criteria for granting an exception include a demonstrated lack of existing suitable facilities within the county that may be used for bridge housing, costs of accessibility improvements exceeding program limits, and other unusual circumstances.

Requests for exceptions shall require substantial evidence to document that the exception criteria are met.

Requests for exceptions are made as part of question 13 of the Application. Applicants will upload the request and any supporting documentation.

Award and Contracting Process

- » Rolling admissions ... rolling awards
- » Review process – Each section reviewed for Proficient or Requires Resubmission
 - » Notice of Conditional Award
 - » Resubmission required
- » Schedule Post-award consultation with AHP
- » Submit BHBH Program Plan
- » Statement of Work and Payment Schedule developed
- » Contract sent for signature, and within 60 days, execute contract

Work can begin at the date of the conditional award, at Counties own risk

Application Procedures

Application Portal

The BHBH Program application uses a fillable form on an online application portal hosted by SurveyMonkey Apply.

Accommodations

DHCS will provide assistive services such as reading or writing assistance and conversion of the RFA, questions and answers, RFA addenda, or other Administrative Notices to Braille, large print, audiocassette, or computer disk as needed. To request copies of written materials in an alternate format, please send an email to BHBHinfo@ahpnet.com or call (323) 545-6202.

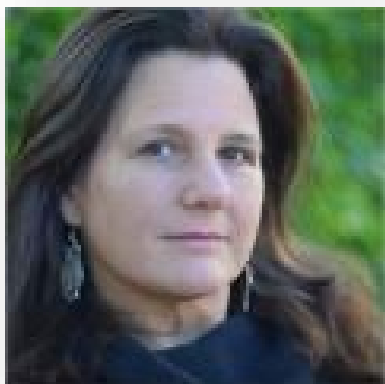
(Portal Demonstration)

Need Help?

- » Responses to questions asked today or through the [BHA RFA Help Desk](#) will be placed in the FAQ on the [RFA website](#). All individuals registered for the webinar will be notified that the answers are available.
- » FAQs will be posted on the BHBH website. If you cannot find an answer to your question, ask us using the [BHBH RFA Help Desk](#).
- » You may also request a consultation through the [BHBH RFA Help Desk](#).
- » Visit the Resource Page and searchable library on the [BHBH Program Website Resources Page](#).

[Behavioral Health Bridge Housing \(BHBH\) Program](#)
[County Behavioral Health Agency](#)
[RFA Help Desk](#)

Contact Us



Deborah (Deb) Werner, MA, PMP
BHBH Program Director
dwerner@ahpnet.com



Michael Helmick
BHBH Deputy Director
mhelmick@ahpnet.com

Thank you

RFA Webpage: <https://bridgehousing.buildingcalhhs.com/county-behavioral-health-agencies/>